



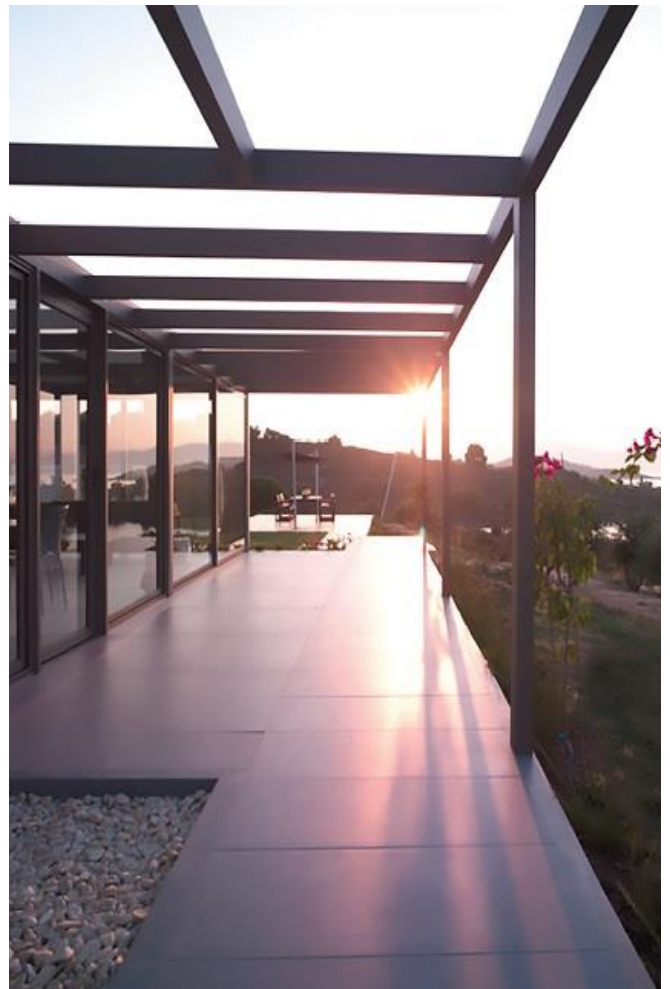
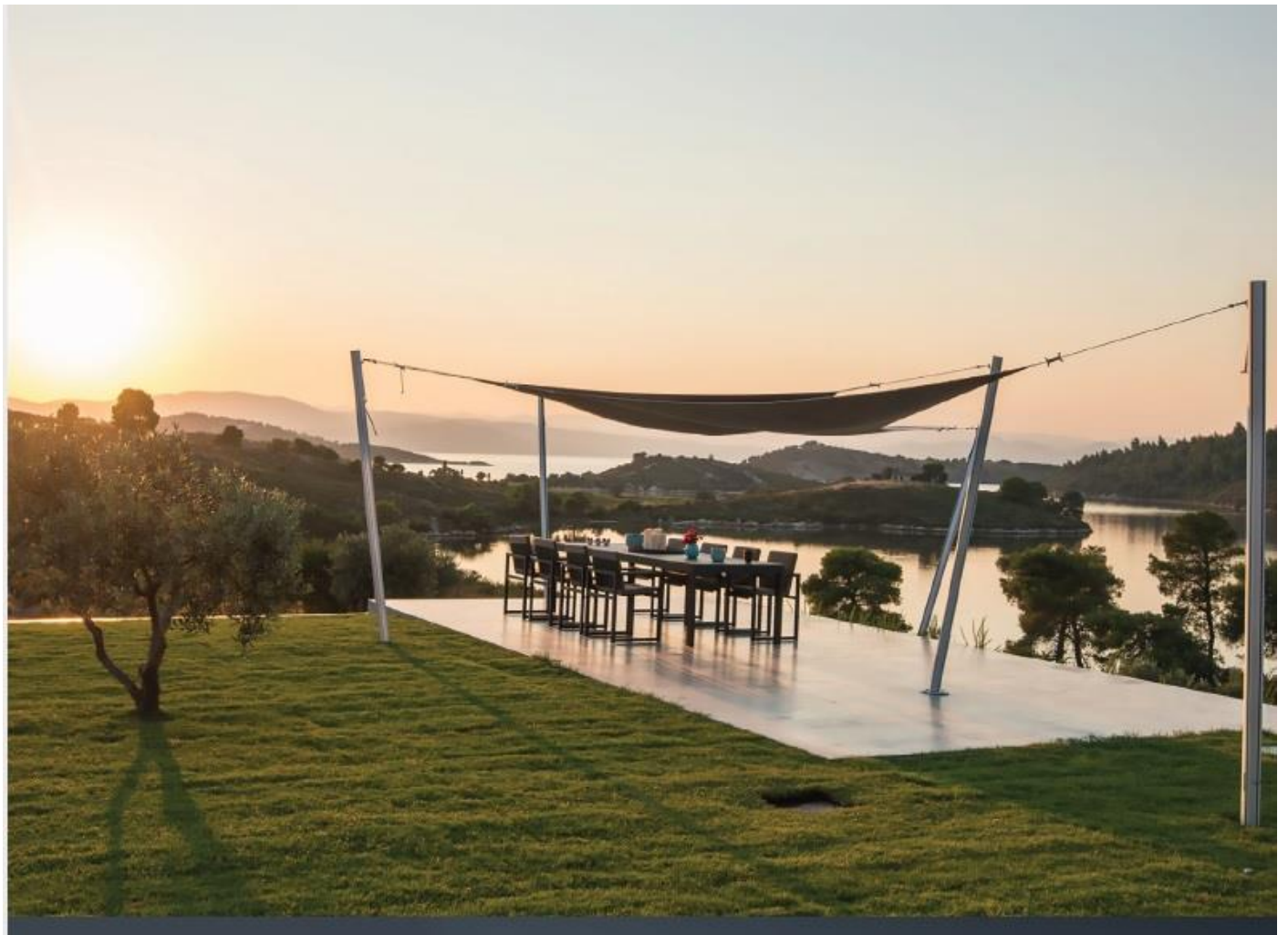
2nd VILLA



This 4 bedroom villa with magnificent views to Mount Athos sits on a 2200 m² plot at the north-eastern part of the island. The total surface area of the buildings is 286 m² which includes 186 m² for the main villa, a studio of 39 m², an independent staff house of 29 m² and warehouse facilities of 32 m². The property lies at an exceptional vantage point that allows its residents to have terrific views of sunrise-sunset!

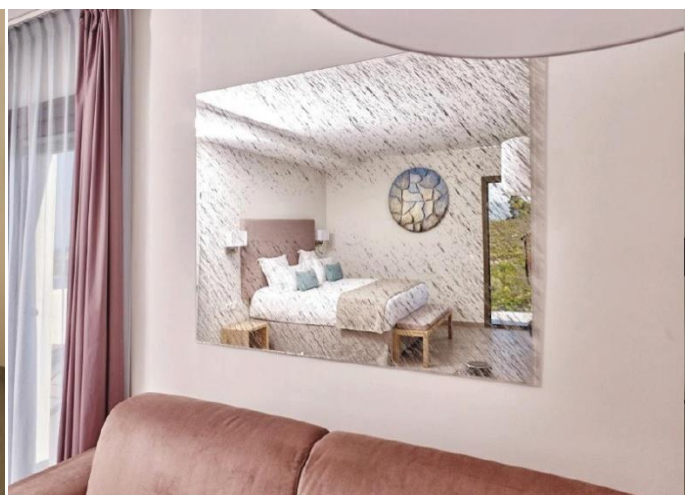








The 130 m2 ground floor includes 2 bedrooms, 3 bathrooms, a fully equipped kitchen and a winter-time dining area.





The 55 m2 first floor includes a master bedroom with an en-suite sitting area and bathroom, and a 39 m2 studio apartment which includes a bedroom and a bathroom.

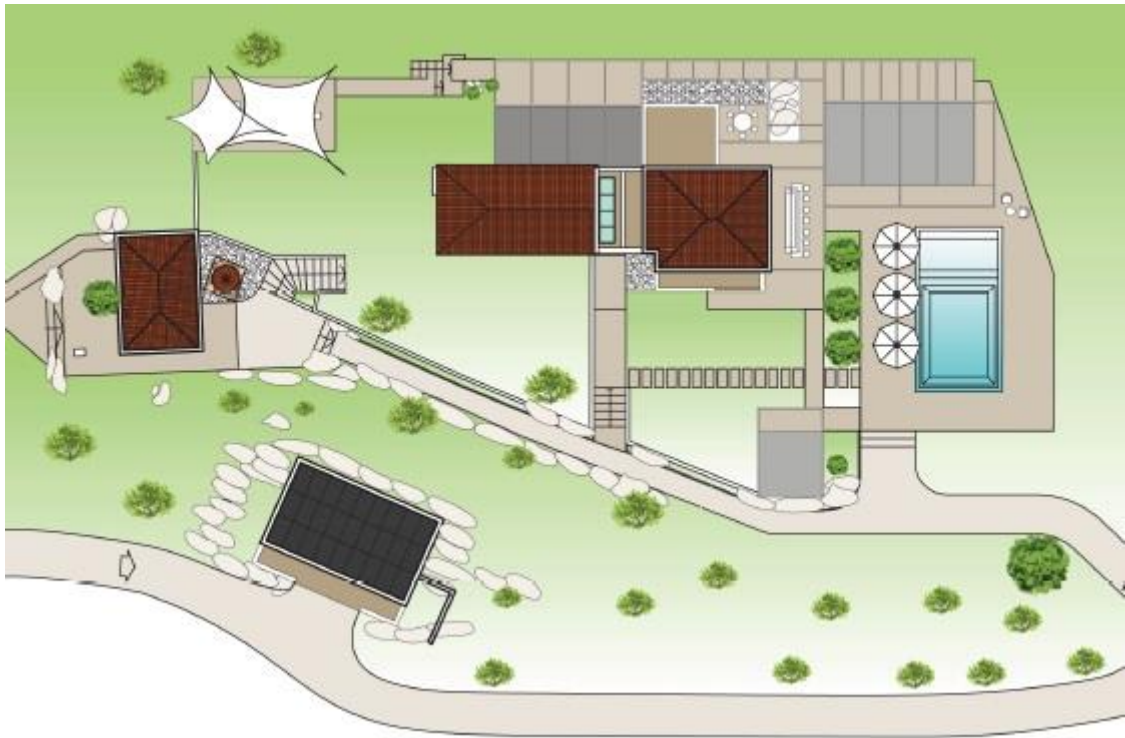




Surrounding Views



PLANS



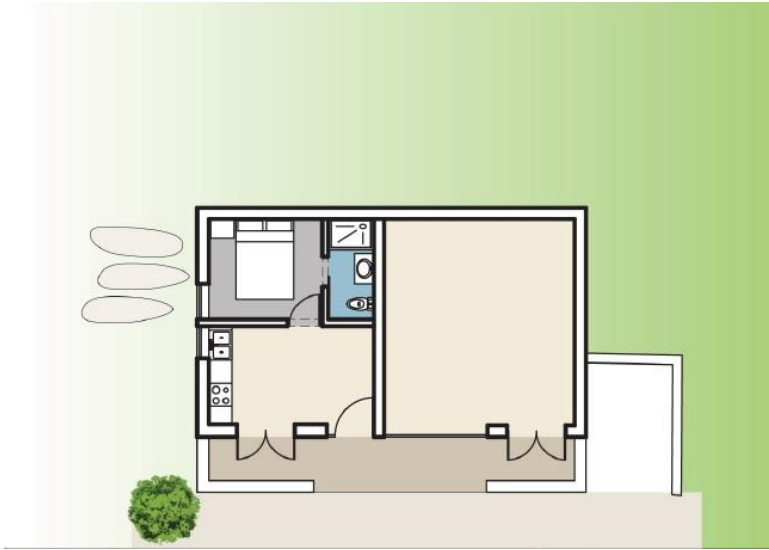
Master Plan



Ground Floor



First Floor



Staff House & Warehouse



Studio